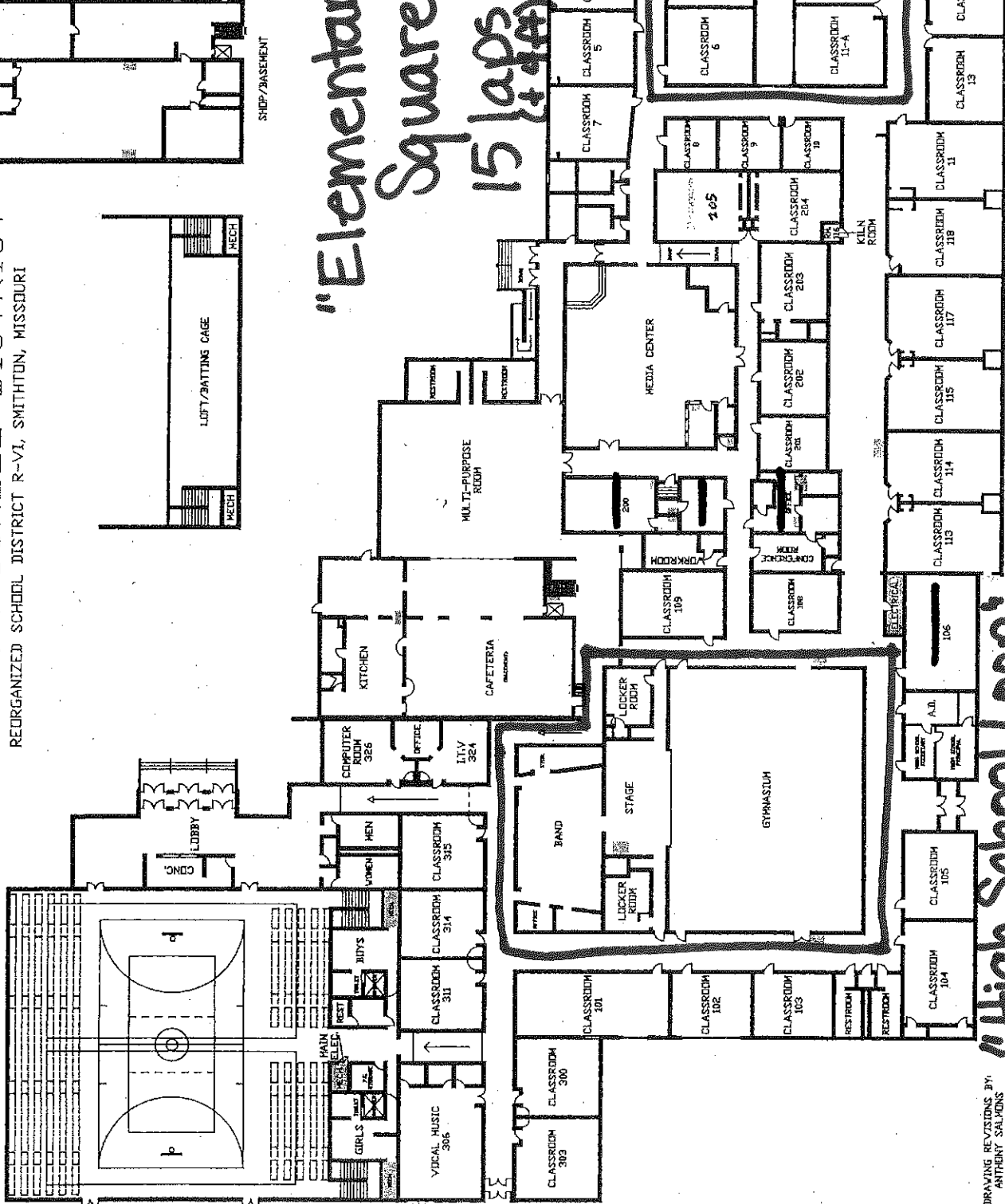


SMITHTON SCHOOL DISTRICT

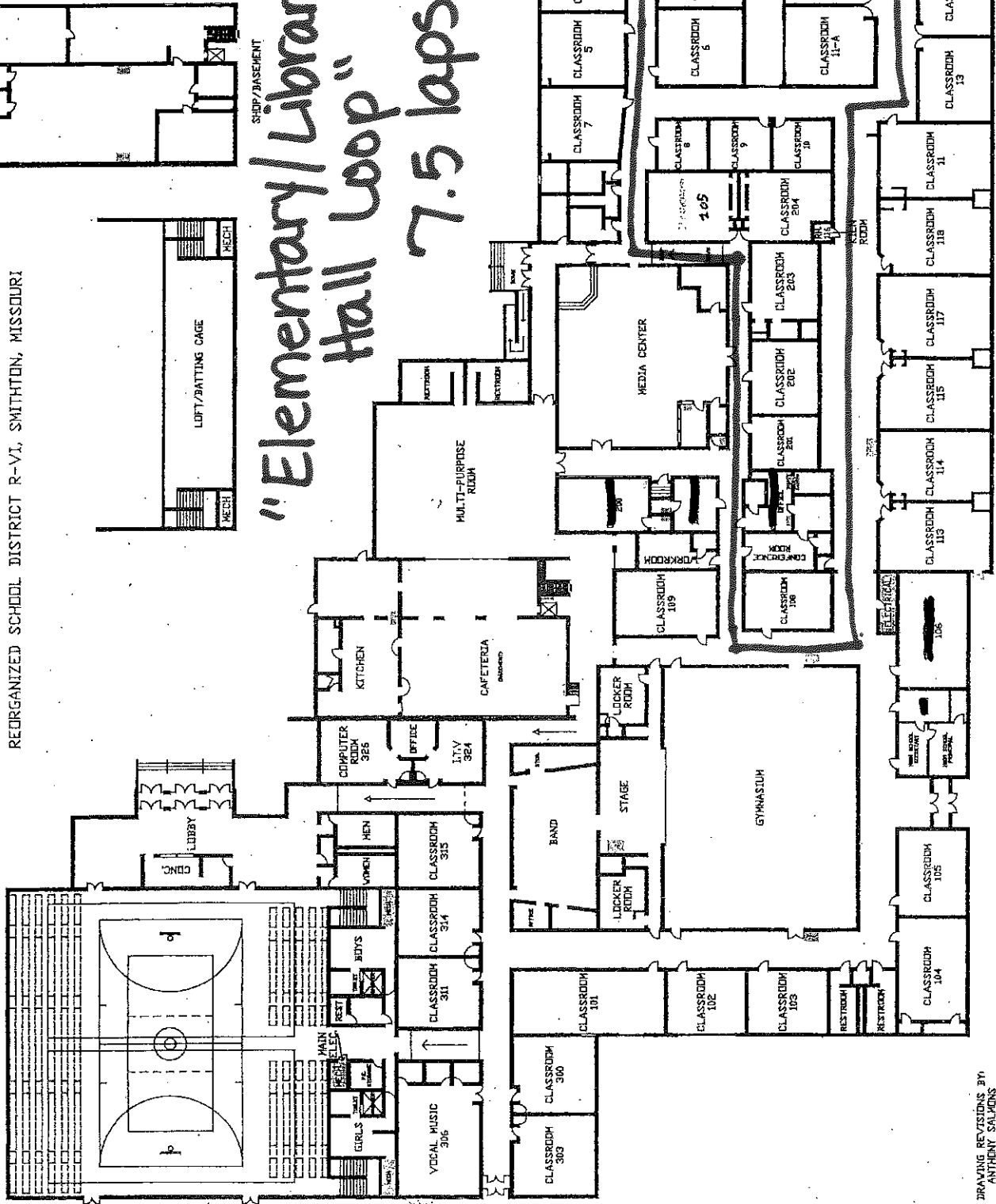
REORGANIZED SCHOOL DISTRICT R-VI, SMITHTON, MISSOURI



- BELLS ARE TURNED OFF IN THE SUPERINTENDENT'S OFFICE.
- SHUT-OFF VALVES ARE LOCATED IN THE BASEMENT BY THE DIRECTOR'S OFFICE AND IN THE MECHANICAL ROOM BEHIND THE GIRLS LOCKER ROOM.
- FIRE ALARM IS LOCATED IN THE MECHANICAL ROOM BY THE H.S. PRINCIPAL'S OFFICE.
- THE MAIN ELECTRICAL SHUT-OFF IS IN THE MECHANICAL ROOM ACROSS FROM THE H.S. COACH'S OFFICE IN THE NEW 6TH.
- SHUT-OFFS ARE OUTSIDE OF H.S. PRINCIPAL'S OFFICE AND OUTSIDE THE LOCAL MUSIC ROOM.
- OUTSIDE THE PRE-SCHOOL ON A TELEPHONE POLE.
- IN THE SUPERINTENDENT'S OFFICE.

DRAWING REVISIONS BY:
 ANTHONY SALMONS
 ETHAN GARRETTSON
 2006-2007

SMITHTON SCHOOL DISTRICT
 REORGANIZED SCHOOL DISTRICT R-VI, SMITHTON, MISSOURI



*"Elementary Library
 Hall Loop"*
 7.5 laps = 1 mile

- BELLS ARE TUNED OFF IN THE SUPERINTENDENT'S OFFICE.
- SHUT-OFF VALVES ARE LOCATED IN THE BASEMENT BY THE DIRECTOR'S ROOM BEHIND THE GIRLS' LOCKER ROOM.
- FIRE ALARM IS LOCATED IN THE PRINCIPAL'S OFFICE.
- THE MAIN ELECTRICAL SHUT-OFF IS IN THE BASEMENT BY THE NEW GYM.
- SHUT-OFFS ARE OUTSIDE OF HIS OFFICE AND OUTSIDE THE VOCAL MUSIC ROOM.
- OUTSIDE THE PRE-SCHOOL ON A TELEPHONE POLE.
- IN THE SUPERINTENDENT'S OFFICE.

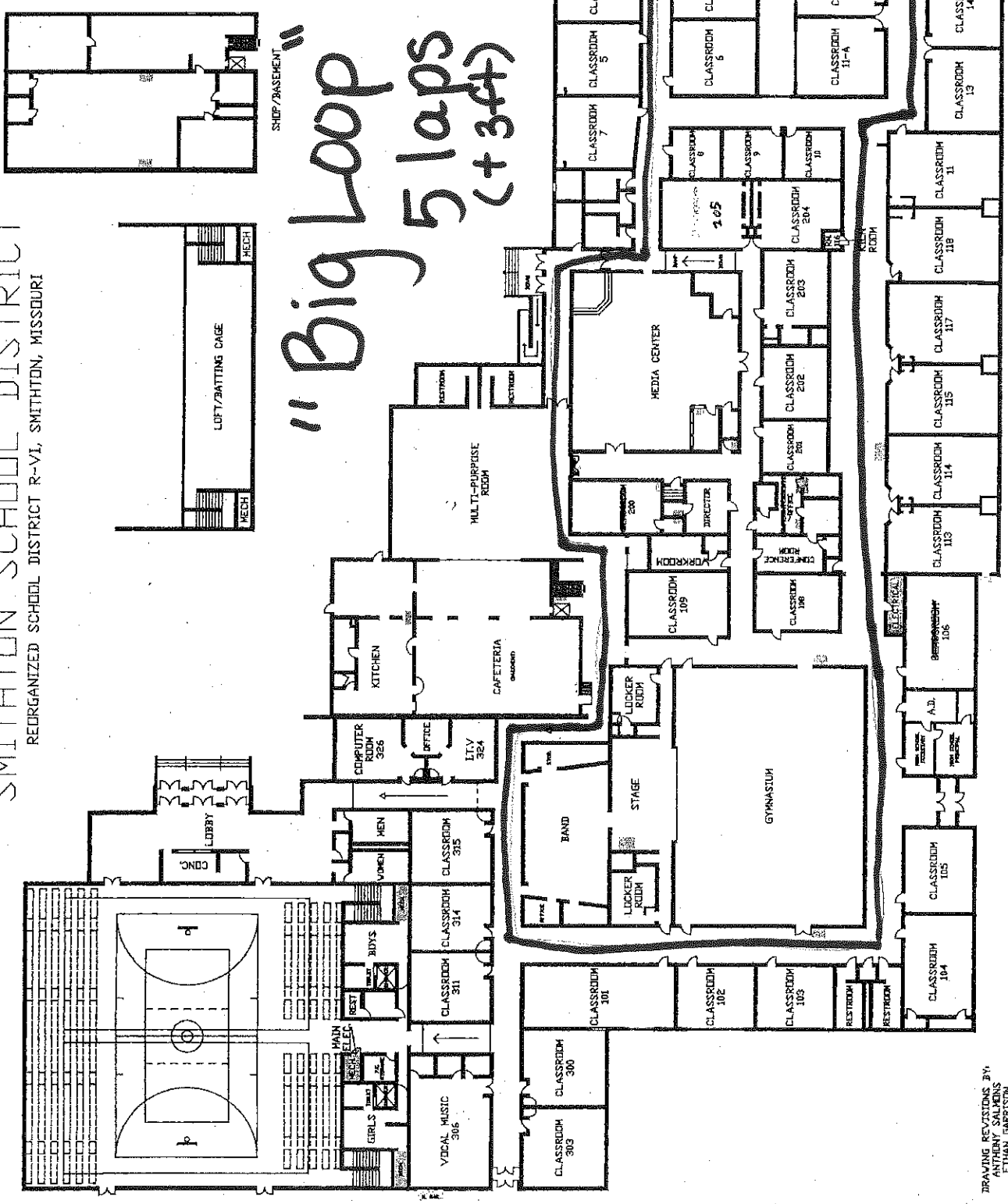
STORAGE
 WORKROOM
 ELEMENTARY PRINCIPAL
 ELEMENTARY SECRETARY
 ELEMENTARY COUNSELOR

SMITHTON SCHOOL DISTRICT

REORGANIZED SCHOOL DISTRICT R-VI, SMITHTON, MISSOURI

- BELLS ARE TURNED OFF IN THE SUPERINTENDENT'S OFFICE.
- SHUT-OFF VALVES ARE LOCATED IN THE BASEMENT BY THE DIRECTOR'S OFFICE AND IN THE MECHANICAL ROOM BEHIND THE GIRLS LOCKER ROOM.
- FIRE ALARM IS LOCATED IN THE MECHANICAL ROOM BY THE H.S. PRINCIPAL'S OFFICE.
- THE MAIN ELECTRICAL SHUT-OFF IS IN THE MECHANICAL ROOM ACROSS FROM THE H.S. COACH'S OFFICE IN THE NEW GYM.
- SHUT-OFFS ARE OUTSIDE OF H.S. PRINCIPAL'S OFFICE AND OUTSIDE THE VOCAL MUSIC ROOM.
- OUTSIDE THE PRE-SCHOOL ON A TELEPHONE POLE.
- IN THE SUPERINTENDENT'S OFFICE.

SHIP/BASEMENT
 "Big Loop"
 5 laps
 (+34)



DRAWING REVISED BY:
 ANTHONY SALMONS
 ETHAN GARRISON
 2006-2007